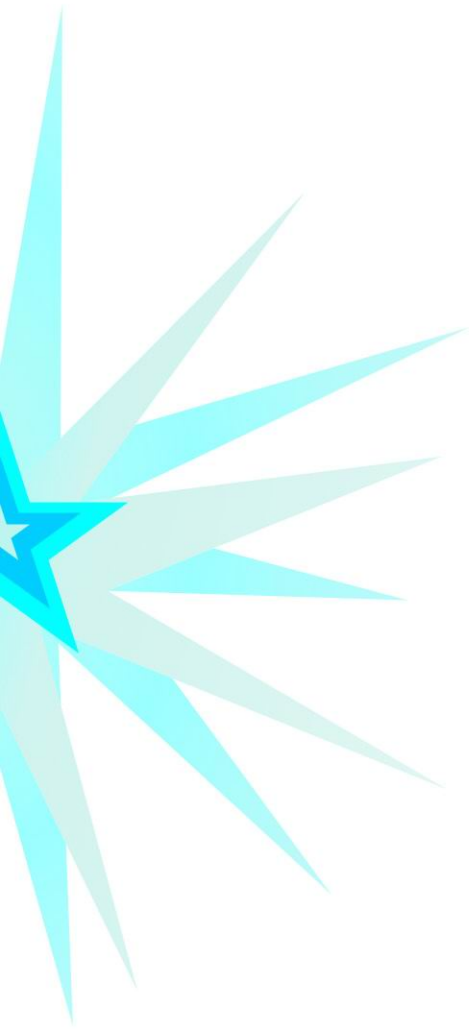




Headway[®] ECDIS

Electronic Chart Display and Information System



Welcome to our website

www.headwaytech.com

Headway® ECDIS

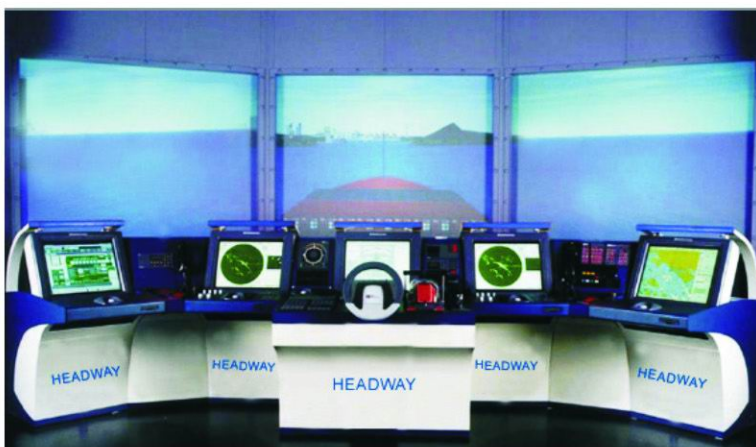
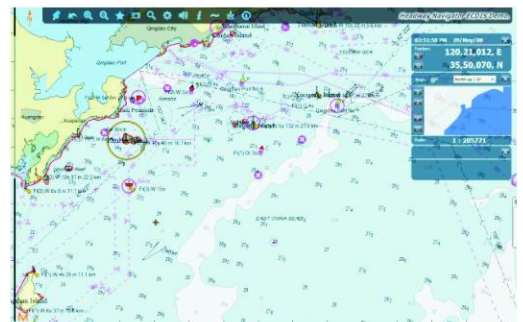
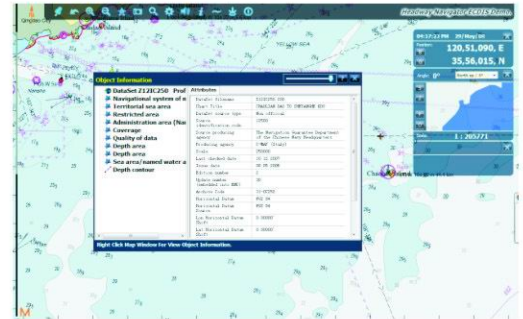
Introduction

Headway® ECDIS is developed strictly according to IEC, IMO and IHO requirements and rules.

The system is able to combine with AIS, GPS, ARPA, Gyro Compass, Speed Log, Echo Sounder, Autopilot and other communication and navigation equipments, so as to deal with varieties of information including maritime geography, sailing states of this vessel, navigation environment and dynamics of a number of target vessels. It can realize functions of navigation, collision-avoidance assistance and route management of vessels, could be widely used in a variety of large and medium sized vessels, which greatly ensures the safety of vessel's voyage, and markedly improve operational efficiencies.

Standards

- IMO Resolution A.694(17)
- IMO-Resolution A.817(19)
- IHO S-52
- SOLAS Regulation V/18.1, V/19.2.1.4, V/19.2.1.5
- IEC 61174 (2001)
- IEC 60945 (2002)
- IEC 61162



Headway® ECDIS

Characteristics

1. Chart Support

Compatible with C-MAP Global Chart and in accordance with IHO-S57 standard; Display function complies to IHO S-52 rules.

2. Multiple Functions

- Auxiliary Navigation

Auxiliary navigation can be realized according to the established routes, acoustic and light alarms can be generated timely for dangerous states, meanwhile, real-time searching of various information of the current vessel and its surroundings could be performed.

- Object Collision-Avoidance Alarms

Combining AIS,APRA to achieve collision-Avoidance assistance alarms.

- Route Management

Automatic recording of voyage course, path and log.

Layout of Routes & Management of Tracks, Automatic Recording of Log.

- Remote Monitoring

Ready access to information of the current vessel and its surrounding vessels via the ground center, which can monitor a number of vessels at the same time, restore the current states of the vessel and its surroundings.

- Chart Information Inquiry

Searching any positions of Chart, including sea-route, water-depth, ocean-current, object-mark, etc.

- Chart Quick Zoom

- Chart Update

Being able to manually add the temporary object-mark and realize automatic or manual chart updates remotely or locally.

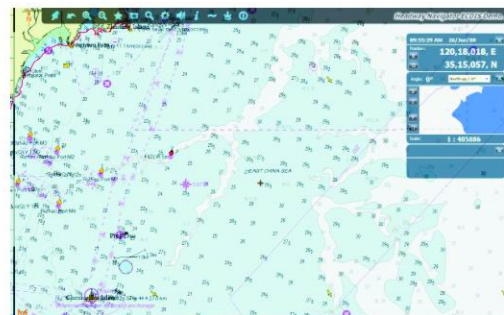
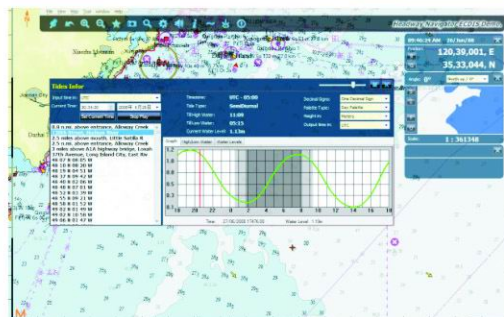
- Multiple Display Modes

Different display modes could be selected as per demands, e.g. dusk, night, daytime.

- Perfect Accidental Power-Off Protection

To prevent losses caused by accidental power-off.

3. Easy Operation, helpful for crew to grasp.



Qingdao Headway Technology Co., Ltd.

Tel: (+86)-532-8870 2807/08

Fax:(+86)-532-8310 7816

E-mail:sales@headwaytech.com

Http://www.headwaytech.com

